



No 2004 – 15
November

The Stock-Flow Approach to the Real Exchange Rate of CEE Transition Economies

Balázs Égert
Amina Lahèche-Révil
Kirsten Lommatzsch

The Stock-Flow Approach to the Real Exchange Rate of CEE Transition Economies

Balázs Égert
Amina Lahrèche-Révil
Kirsten Lommatzsch

No 2004 – 15
November

TABLE OF CONTENTS

SUMMARY	4
ABSTRACT	5
RÉSUMÉ	6
RÉSUMÉ COURT	7
1. INTRODUCTION	8
2. THEORETICAL FRAMEWORK	10
3. ESTIMATION ISSUES	12
4. ESTIMATION RESULTS	18
5. CONCLUSION	25
BIBLIOGRAPHY	27
APPENDIX 1	30
APPENDIX 2	31
LIST OF WORKING PAPERS RELEASED BY CEPII	34

**THE STOCK-FLOW APPROACH TO THE REAL EXCHANGE RATE
OF CEE TRANSITION ECONOMIES**

SUMMARY

Transition economies in Central and Eastern Europe have experienced a rather substantial real appreciation of their currencies in the past decade. This appreciation is often related to the Balassa-Samuelson effect of rising prices of non-tradable goods during the catching-up, although its importance for the price level convergence of transition economies has been questioned lately. Macro-economic models and reduced-form equations have also been used for assessing determinants of the real exchange rate. In addition to productivity, they consider a wide range of other determinants, such as foreign debt or net foreign assets, terms of trade, government debt and regulated prices.

In this study, we use the stock-flow approach to the equilibrium exchange rate proposed by Alberola et al. (1999, 2002) to determine long-term factors driving the real exchange. In view of the large current account deficits that most of the transition countries of Central and Eastern Europe have been experiencing, the question of the impact of net foreign assets on the real exchange rate and external equilibrium is indeed highly relevant. We also follow Aglietta et al. (1998) by taking into account the impact of non-price competitiveness on equilibrium real exchange rate developments.

Firstly, we show that the normally positive relationship between net foreign asset accumulation and real exchange rate appreciation is not a general feature of small open economies. Using panel cointegration techniques, and splitting our sample into smaller and more homogeneous sub-samples, we show that an improving net foreign asset position does correspond to a real exchange rate appreciation for a group of small and open OECD countries. By contrast, a decrease in net foreign assets is found to be systematically linked to a real appreciation of the exchange rate for different groups of transition economies. We suggest that the systematically different sign of net foreign assets may be related to the time period studied, i.e. the distinction between the medium run and the long run. The 30-year period for the OECD countries may be viewed as the long term, whereas the slightly more than 10-year period for the transition economies can be considered as the medium run, i.e. convergence towards a long-term level. According to the model, in the long run, net foreign assets are assumed to have reached their desired level. Therefore, an increase in net foreign assets implies an appreciation of the real exchange rate because higher net foreign assets mean higher inflows of income. However, the medium run is characterised by the adjustment of net foreign assets to their desired level. If countries desire a negative stock of net foreign assets (which seems to be the case in the transition economies), they run current account deficits and record a real appreciation of the exchange rate.

Secondly, the sources of CPI-based real exchange rate appreciation differ between groups of countries. Real exchange rates in OECD countries are found to behave in line with predictions of the new open macro-economy models, implying that the B-S effect causes the real exchange rate to appreciate whilst productivity gains in the open sector result in a

depreciation of the open sector's real exchange rate. In contrast to this stand our findings for transition economies, where the real exchange rate appreciates not only because of B-S factors but also because of the appreciation of the open sector driven by improving non-price-competitiveness.

Thirdly, our results indicate that the CPI-to-PPI ratio is an imperfect proxy for relative prices when measuring the B-S effect because this ratio not only reflects the relative price of market-based non-tradable goods but also a number of other factors. Moreover, it is not appropriate to use the CPI-to-PPI ratio (and relative prices in general) as a proxy for relative productivity in transition economies because it cannot fully convey the effect of productivity gains to the real exchange rate, i.e. the appreciation of the real exchange rate of the open sector.

Finally, we show that sizeable differences exist between in-sample (transition economies and all countries put together) and out-of-sample (OECD countries), as regards the sign and the size of the estimated coefficients. This suggests that both measures offer complementary information on equilibrium exchange rates. Equilibrium rates derived from the panel of OECD countries give an insight on the long run for the transition economies, but may be less easily interpreted for policy purposes.

The paper is organised as follows: Section 2 presents the theoretical framework. Section 3 describes the data and the estimation methods. Estimation results are then presented in Section 4. Finally, Section 5 concludes.

ABSTRACT

This paper investigates the determinants of equilibrium real exchange rates for the new EU member states and candidate countries, relying on an asset model inspired by Aglietta et al. (1998) and Alberola et al. (1999, 2002). The impact of productivity gains on both the Balassa-Samuelson effect and the behaviour of the tradable real exchange rate is especially assessed. Subdividing the panel into sub-panels, we show that the B-S effect is a common feature to all economies, but that the tradable price-based real appreciation is a distinct feature of transition and emerging economies. We also show that in transition countries, a decrease in net foreign assets leads to an appreciation of the real exchange rate, instead of the depreciation predicted by theory. Comparing in-sample and out-of-sample estimates (in terms of the country coverage) of equilibrium exchange rates shows that these measures can yield different results, and could therefore be considered as complementary tools in judging misalignments.

J.E.L. classification: C15, E31, F31, O11, P17

Keywords: real equilibrium exchange rate, EU enlargement, Balassa-Samuelson effect, productivity, net foreign assets, out-of sample panel

**L'APPROCHE STOCK-FLUX DU TAUX DE CHANGE REEL DANS LES ECONOMIES EN
TRANSITION D'EUROPE CENTRALE ET ORIENTALE**

RÉSUMÉ

Les économies en transition d'Europe centrale et orientale ont subi une appréciation relativement forte de leur monnaie au cours de la décennie passée. Elle est souvent reliée à l'effet Balassa-Samuelson (BS), qui rend compte de l'augmentation du prix relatif des biens non-échangeables au cours du processus de rattrapage. Les modèles macro-économiques et les équations de forme réduite ont également été utilisés pour rendre compte des déterminants du taux de change réel. Ils tiennent compte, outre de la productivité, d'un ensemble de déterminants, tels que la dette extérieure ou les actifs extérieurs nets, les termes de l'échange, la dette publique et les prix réglementés.

On utilise ici l'approche stock-flux du taux de change réel d'équilibre proposée par Alberola et al. (1999, 2002) pour analyser les facteurs de long terme déterminant le taux de change réel. Compte tenu des forts déficits courants que connaissent la plupart des pays en transition d'Europe centrale et orientale, la question de l'impact de la position extérieure nette sur le taux de change réel d'équilibre est effectivement importante. Comme Aglietta et al. (1998), on tient compte de l'impact de la compétitivité hors-prix sur le comportement du taux de change réel d'équilibre.

On montre d'abord que la relation entre position extérieure nette et appréciation réelle du change, normalement positive, n'est pas une caractéristique générale des petites économies ouvertes. A l'aide des techniques de cointégration de panel, et en subdivisant l'échantillon de pays en sous-échantillons plus homogènes, on montre que l'amélioration de la position extérieure nette conduit bien à une appréciation réelle dans les petites économies ouvertes de l'OCDE. Au contraire, dans différents sous-échantillons de pays en transition, c'est la dégradation de la position extérieure nette qui est systématiquement associée à une appréciation réelle. On suggère que la différence de signe sur le coefficient estimé pourrait être liée à la période de temps étudiée, c'est-à-dire à la présence différenciée de dynamiques de long et de moyen terme. La période de 30 ans utilisée pour les pays de l'OCDE peut être considérée comme du long terme, tandis que la décennie disponible dans le cas des pays en transition peut être considérée comme rendant compte du moyen terme.

Selon le modèle, à long terme, les actifs extérieurs nets sont réputés avoir atteint leur niveau désiré. Par conséquent, une amélioration de la position extérieure nette conduit à une appréciation du taux de change réel, car elle implique une hausse des entrées de revenus. Cependant, le moyen terme est caractérisé par l'ajustement des actifs extérieurs nets à leur niveau désiré. Si les pays désirent un stock d'actifs extérieurs nets négatifs (ce qui semble être le cas dans les économies en transition), ils enregistrent des déficits courants et une appréciation réelle.

Deuxièmement, les sources d'appréciation du taux de change réel défini par les prix à la consommation diffèrent selon les groupes de pays. Les taux de change réels dans les pays de l'OCDE se comportent en conformité avec les modèles de la nouvelle macro-économie

ouverte : l'effet BS conduit à une appréciation du taux de change réel, tandis que les gains de productivité dans le secteur exposé résultent dans la dépréciation prix relatif des biens échangeables. Les résultats obtenus sur les économies en transition contrastent avec cette interprétation, puisque le taux de change réel s'y apprécie non seulement en raison de l'effet BS, mais également en raison de l'appréciation dans le secteur exposé, lié à l'amélioration de la compétitivité hors-prix.

Troisièmement, il apparaît que le ratio de l'indice des prix à la consommation et de l'indice des prix à la production (IPC/IPP) est une approximation imparfaite des prix relatifs lorsqu'on l'utilise pour mesurer l'effet BS, car il ne rend pas compte uniquement du prix relatif des biens non-échangeables. En outre, il ne paraît pas approprié d'utiliser le ratio IPC/IPP (et les prix relatifs d'une manière générale) comme approximation de la productivité relative dans les économies en transition, car cette mesure ne peut rendre parfaitement compte de l'impact des gains de productivité sur le taux de change réel, c'est-à-dire de l'appréciation du taux de change réel du secteur exposé.

Enfin, on montre qu'il existe des différences significatives entre les estimations *in-sample* (où l'on considère les économies en transition avec tous les pays de l'échantillon) et les estimations *out-of-sample* (menées sur les seuls pays de l'OCDE) pour ce qui concerne le signe et la taille des coefficients estimés. Ceci suggère que les deux mesures fournissent des informations complémentaires sur les taux de change d'équilibre. Les taux de change qui sont dérivés de l'échantillon de pays de l'OCDE donnent un aperçu du long terme pour les économies en transition, mais sont moins faciles d'interprétation pour les objectifs de politique économique.

Après une introduction (section 1), cet article présente le cadre théorique d'analyse (section 2). La section 3 décrit les données et les méthodes d'estimation. Les résultats sont présentés dans la section 4, et la section 5 conclut.

RÉSUMÉ COURT

On étudie les déterminants du taux de change réel d'équilibre pour les nouveaux états membres et les nouveaux candidats de l'Union européenne, à partir d'un modèle d'actif inspiré de ceux d'Aglietta et al. (1998) et Alberola et al. (1999, 2002). L'analyse se concentre en particulier sur la mesure de l'effet Balassa-Samuelson (BS) par les gains de productivité et le comportement du taux de change réel du secteur échangeable. En scindant l'échantillon en sous-groupes, on montre que l'effet BS est une caractéristique commune à tous les pays, mais que les prix du secteur échangeable présentent une dynamique particulière dans les pays émergents et en transition. On montre également que dans les économies en transition, une réduction de la position extérieure nette entraîne une appréciation du taux de change réel, contrairement à ce que prédirait la théorie. La comparaison d'estimations *in* et *out-of-sample* (en termes de couverture géographique) du taux de change d'équilibre réel montre que ces mesures peuvent produire des résultats différents, et qu'elle peuvent être considérées comme des instruments complémentaire d'évaluation des distorsions de change.

J.E.L.: C15, E31, F31, O11, P17

Mots-clés: taux de change réel d'équilibre, élargissement, effet Balassa-Samuelson, productivité, actifs extérieurs nets, analyse de panel

**THE STOCK-FLOW APPROACH TO THE REAL EXCHANGE RATE
OF CEE TRANSITION ECONOMIES**

*Balázs Égert** *Amina Lahrière-Révil*** *Kirsten Lommatzsch****

1. INTRODUCTION

Transition economies in Central and Eastern Europe have experienced a rather substantial real appreciation of their currencies, which could make meeting the nominal convergence criteria difficult. This sizeable real appreciation is often related to the Balassa-Samuelson effect of rising prices of non-tradable goods during the catching-up process (e.g. Halpern and Wyplosz, 2001, Backé et al., 2002), although its importance for the price level convergence of transition economies has been questioned lately (Coricelli and Jazbec, 2004; Égert, 2002, Égert et al., 2003, Mihajlek and Klau, 2004). Macro-economic models and reduced-form equations have also been used for assessing determinants of the real exchange rate. In addition to productivity, they consider a wide range of other determinants, such as foreign debt or net foreign assets, terms of trade, government debt and regulated prices (e.g. Csajbók, 2003 ; Alberola, 2003 ; Rawdanowicz, 2003 ; Égert and Lommatzsch, 2004).

A major problem for assessing the factors driving equilibrium rates for transition countries is the lack of long time series providing sufficient numbers of observation for econometric testing. Time series estimations may not be robust enough to establish reliably long-term determinants of the real exchange rate. Therefore, panel estimations have gained popularity (Kim and Korhonen, 2002 ; Crespo-Cuaresma et al., 2003). However, a question arises as to whether it is more appropriate to make use of out-of-sample or in-sample estimations.¹ Maeso-Fernandez et al. (2004) argue that out-of-sample panel estimates may be superior to in-sample panel estimates for transition economies because in the presence of initial undervaluation, in-sample panels produce biased estimates. However, while such an approach attempts to correct the constant term, it cannot, by nature, account for possible

* Oesterreichische Nationalbank; MODEM, University of Paris X-Nanterre and the William Davidson Institute. Balazs.Egert@oenb.at; begert@u-paris10.fr

** CEPII; lahreche@cepii.fr

*** DIW-Berlin; klommatzsch@diw.de

We would like to thank Jarko Fidrmuc, László Halpern, and participants of seminars held at CEPII, at MODEM, University of Paris X-Nanterre, at the European Department of the IMF, at the Bank of Slovenia and participants of the Accession Countries Conference held at the European University Institute, for helpful comments and suggestions. All remaining errors are ours.

The views expressed in the paper do not necessarily reflect the position of the Oesterreichische Nationalbank or the European System of Central Banks (ESCB).

¹ In-sample and out-of-sample estimates are defined here in terms of country coverage. Namely, out-of-sample measures of the equilibrium exchange rate for a given country are based on exchange-rate equations estimated on a sample where from this country is excluded. Conversely, in-sample measures are derived from equations estimated on a geographical sample including the country of interest.

parameter differences between transition countries and the more developed countries, e.g. in the OECD, regarding net foreign assets and productivity. Such differences are yet likely: the catching-up process may, at an early stage, justify an increase in foreign liabilities because foreign savings are needed for the growth potential to materialise; rapid changes in supply capacities and technology may imply that productivity impacts on the real exchange rate through different channels than in industrialised countries operating at the technological frontier.

In this paper, we make a further step in comparing panel estimates from out-of sample and in-sample estimates. As a background, we use the stock-flow approach as set out in e.g. Faruquee (1995), Aglietta et al. (1998) and Alberola et al. (1999, 2002). In this approach, the equilibrium real exchange rate is determined by the stock and flow of assets between countries. Any country has a desired stock of net foreign assets which it aims to achieve in the long run. The equilibrium real exchange rate prevails at a current account position consistent with the income flows from the desired stock of foreign assets. In view of the large current account deficits that most of the transition countries² of Central and Eastern Europe have been experiencing, the question of the impact of net foreign assets on the real exchange rate and external equilibrium is highly relevant. An increase in net foreign liabilities is often found to lead to an appreciation of the equilibrium real exchange rate of the transition countries. This is in contrast to what theory would suggest, i.e. a rise in net foreign liabilities should cause the real exchange rate to depreciate. The solution to this conundrum seems to be linked to different time horizons and the movement towards the desired level of foreign assets or liabilities.

Besides net foreign assets, we also consider labour productivity. The productivity variable is usually interpreted with reference to the Balassa-Samuelson (B-S) effect, which causes the real exchange rate to appreciate via an increase in the relative price of non-tradable goods. However, we also view productivity as channelling changes in the tradable price-based real exchange. This is the case in transition economies because industrial productivity gains do not only reflect the cost-competitiveness of the countries, but also quality improvements – i.e. non-price competitiveness – . Therefore, productivity improvements are expected to lead to an appreciation of the real exchange rate. Using medium-size panels for different groups of countries: (1) small, open OECD countries (2) emerging economies of Asia and the Americas (3) transition countries from Central and Eastern Europe (4) all countries put together, we show that transition and emerging market economies do experience a tradable price-based appreciation, which is not the case in the more developed OECD countries. The use of different proxies for productivity allows us to show that the CPI-to-PPI ratio so often used in the literature as a proxy for relative productivity vehicles other type of information as well, and is an imperfect substitute for the Balassa-Samuelson effect.

² The term “transition economy” is used throughout the paper instead of “new EU member state” (Czech Republic, Estonia, Hungary, Latvia, Lithuania, Poland, Slovakia and Slovenia) or “candidate country” (Bulgaria, Croatia and Romania) because for most of the period used for the estimations, the countries from Central and Eastern Europe can be viewed as transition economies.

The paper is organised as follows: Section 2 presents the theoretical framework. Section 3 describes the data and the estimation methods. Estimation results are then presented in Section 4. Finally, Section 5 concludes.

2. THEORETICAL FRAMEWORK

Real Exchange Rate Decomposition

Decomposing the real exchange rate allows separating competitiveness from relative price issues, as all prices need not affect the ability of a country to sell goods or services abroad.

Considering the consumer price index (CPI) composed of tradable and non-tradable goods with α and $(1-\alpha)$ being the respective share of tradable and non-tradable goods in the CPI, the real exchange rate (q)³ can be split into two components: (1) the real exchange rate of the open sector, p^T being the price index of tradable goods, and (2) the ratio of domestic to foreign relative price of non-tradable goods, p^{NT} (which came to be known as the internal real exchange rate) as shown below (all variables are transformed into logs):

$$q = \underbrace{e + p^{*T} - p^T}_{\text{real exchange rate for the tradable sector}} - \underbrace{\left((1-\alpha) \overbrace{(p^{NT} - p^T)}^{\text{Internal real exchange rate}} - (1-\alpha^*) (p^{*NT} - p^T) \right)}_{\text{ratio of the domestic to the foreign relative price of non-tradable goods}} \quad (1)$$

This decomposition allows to separate the factors that influence the real exchange rate of the open sector (and hence the current account via the trade balance), from the ones that are related to the price developments in the non-tradable sector.

According to asset models of the real exchange rate⁴, the current account is driven, in the long run, by the adjustment of net foreign assets towards their desired position. The equilibrium real exchange rate of the open sector is affected by this adjustment, and can thus deviate from the purchasing power parity (PPP). On the opposite, the relative price of non-tradable goods need not affect international competitiveness, and hence the current account position and changes in net foreign assets⁵.

The Real Exchange Rate of the Open Sector

³ $q = e + p^* - p$ where e and p are the nominal exchange rate and the overall price index. The asterisk denotes the foreign country. Note also that the exchange rate is defined as units of domestic currency per one unit of foreign currency. Thus, an increase (decrease) in the exchange rate denote a depreciation (appreciation).

⁴ Frenkel and Mussa (1985), Faruqee (1995), Aglietta et al. (1997), Alberola et al. (1999) and Lane and Milesi-Ferretti (2002).

⁵ It need not, but it can, if non-tradables are inputs for the production of tradables, and their increase implies cost pressure on the tradable goods prices.

The theoretical motivation of our empirical analysis draws on the model developed by Alberola et al. (1999, 2002). The equilibrium real exchange rate is defined as the real exchange rate that leads simultaneously to internal and external balances.

Internal balance is reached when the domestic goods market clears (non-inflationary level of employment, i.e. output near to its potential level). Hence, it conveys both a Balassa-Samuelson (B-S) effect (the relative price of non-tradable goods increases when productivity rises faster in the tradable sector than in the non-tradable sector) and a demand effect.

External balance refers to current account sustainability, which implies that, in the long run, the current account is balanced and net foreign assets have converged to their steady state. The long-run equilibrium real exchange rate secures the trade balance deficit (surplus) to correspond to the income payments received (made) by the country. In the medium term, external balance is characterised by the convergence of net foreign assets towards their desired level, i.e. current account deficits or surpluses are connected with desired capital flows. Following Frenkel and Mussa (1985), the medium-run adjustment can be defined as the convergence of net foreign assets towards their desired level and as the difference between short and long-run interest rates.

This model leads to the following testable equation, where the real effective exchange rate (q) is determined jointly by the dual productivity differential ($prod$)⁶ and net foreign asset (nfa)

$$q = f(prod, nfa) \quad (2)$$

In such a framework, external equilibrium only relies on price-competitiveness, as net foreign asset developments feed back into the real exchange rate to achieve the desired current account position. However, current account developments do not only depend on price-competitiveness. This is especially the case in emerging markets, which experience an upgrading in the quality of specialisation, but also in developed economies, where product differentiation leads the price-elasticity of demand for tradable goods to decrease. This issue is explicitly taken into account in the theoretical model developed by Aglietta et al. (1998), drawing on Faruqee (1995).

In Aglietta et al (1998), the external equilibrium depends both on the net foreign asset position and non-price competitiveness (npc), the underlying assumption being that an improvement in non-price competitiveness allows for an appreciation of the real exchange rate for a given current account position. Consistently with other theoretical models, the internal equilibrium is determined by a Balassa-Samuelson effect. The resulting reduced real exchange rate equation is the following:

$$q = f\left(\overset{-}{prod}, \overset{-}{npc}, \overset{+/-}{nfa}\right) \quad (2')$$

⁶ The dual productivity differential is defined as: $(prod^T - prod^{NT}) - (prod^{T*} - prod^{NT*})$

This model of stock-flow adjustment suggests a long-term relationship between the real exchange rate and net foreign assets on the one hand, and determinants of the trade account on the other. An increase in non-price competitiveness and in relative productivity leads to an appreciation of the equilibrium real exchange rate. The sign on net foreign assets is, however, not clear-cut. If the desired stock of net foreign assets is negative (because the higher expected growth or returns in the domestic economy make the use of foreign savings desirable), the economy will be moving to a desired foreign debt position, which, in turn, implies current account deficits and a real appreciation of the exchange rate (hence, a positive relationship between nfa and q). Therefore, the effect of income payments for the foreign debt (requiring a real depreciation when nfa falls) may dominate the exchange rate determination only at a later point when the desired level of foreign debt or negative foreign assets is achieved (negative relationship between nfa and q).

3. ESTIMATION ISSUES

3.1 Measuring Non-Price-Competitiveness

Aglietta and others (1998) measure non-price competitiveness by means of the R&D expenditure. This proxy does not seem to fit well non-price competitiveness developments in transition economies, where technology is mostly imported from abroad via massive foreign direct investment (FDI)⁷, which is in turn reflected in huge productivity advances in the industrial sector. This last feature gives support to the use of average industrial labour productivity as a proxy for non-price competitiveness. The catching-up process entails a shift towards the supply of goods of higher quality and value-added and better reputation. If labour productivity is associated with quality improvements, or a better product differentiation, the relative price of tradable goods can increase, because demand becomes less price-elastic⁸. While quality improvement is present in all economies, in transition economies, this process seems to be more pronounced and can even lead to real appreciation, as put forward in Égert and Lommatzsch (2004).

The approximation of quality and technology changes by average productivity may however apply only to transition countries. The fact that an increase in productivity in the open sector may be linked to a real appreciation of the open sector's real exchange rate in transition economies is in sharp contrast with predictions of models within the New Open Economy Macroeconomics (NOEM) framework. In these models, an increase in productivity leads to a depreciation of the real exchange rate of the open sector because of a decrease in the prices of tradables relative to those in the foreign economy (Beningo and Thoenissen, 2003, MacDonald and Ricci, 2002 and Világi, 2004).

When assessing the behaviour of the real exchange rate based on a broad measure of prices such as the CPI, productivity can also account for the B-S effect: an increase in the dual productivity differential leads to an appreciation of the internal real exchange rate and

⁷ R&D is chiefly produced in the origin countries of the multinational firms which have been investing in the transition countries.

⁸ The new theory of international trade also accounts for such a possibility. According to Krugman (1989), growth may be associated with an increase in the variety of tradable goods produced in the domestic economy. The resulting decrease in the relative price elasticity of demand for exports allows for an appreciation of the real exchange rate of the tradable goods.

consequently the CPI-based real exchange rate. In our test, average labour productivity in industry in the home country relative to the foreign benchmark will capture both the non-price-competitiveness and the B-S effects.⁹ To distinguish between the two channels through which productivity affects the real exchange rate, not only the CPI-based real exchange rate, but also the producer price index (PPI)-deflated (as a proxy for tradable goods) real exchange rate is regressed on productivity and net foreign assets.

3.2 Reduced Form Equations

The baseline scenario considers the real exchange rate deflated using the CPI on the one hand, and productivity and net foreign assets on the other, given in equation (3):

$$q^{CPI} = f(\overset{-}{prod}, \overset{+/-}{nfa}) \quad (3)$$

The effect of productivity improvements on the real exchange rate of the open sector is also assessed in equation (4), where the producer price index (PPI)-deflated (as a proxy for tradable goods) real exchange rate is also regressed on productivity and net foreign assets:

$$q^{PPI} = f(\overset{+/-}{prod}, \overset{+/-}{nfa}) \quad (4)$$

Because of comparison reasons, we also perform the estimations using the relative price of non-tradables to that of tradables given by the domestic CPI-to-PPI ratio relative to the foreign CPI-to-PPI ratio:

$$q^{CPI} = f(\overset{-}{rel}, \overset{+/-}{nfa}) \quad (3')$$

$$q^{PPI} = f(\overset{-}{rel}, \overset{+/-}{nfa}) \quad (4')$$

It is common practice in the literature to use the CPI-to-PPI ratio as a proxy for productivity to account for the B-S effect. There are, however, two problems with this identification. First, productivity gains can affect the real exchange rate, especially in transition countries via different channels (see Figure 1.). Second, the CPI-to-PPI ratio is not a proper proxy for the relative price of market non-tradables through which productivity gains feed into the real exchange rate, because it also measures the impact of the following factors:

- (a) Higher demand for non-tradable goods because of higher income ;
- (b) Indirect taxes (which are included in the calculation of the CPI, but not in the calculation of the PPI, the latter referring to producer prices before adding indirect taxes);
- (c) The adjustment of regulated prices (which concerns most often non-tradables); and
- (d) More difficulties in adjustment for quality changes of non-tradables than tradables.

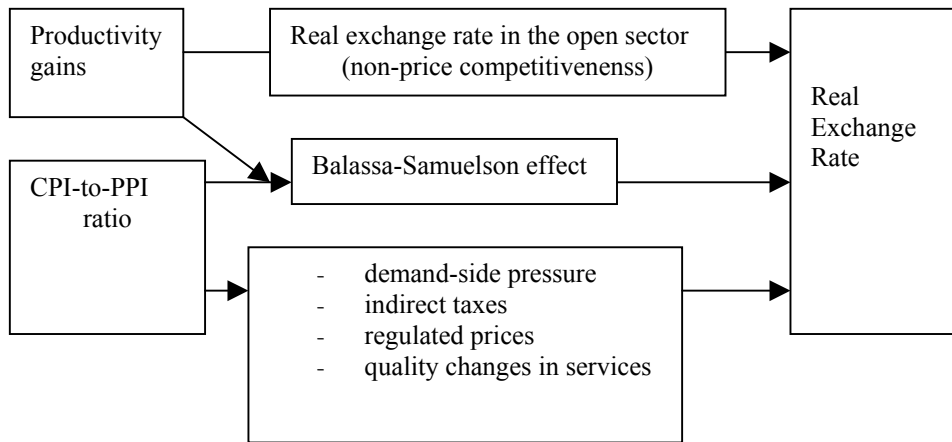
⁹ It is implicitly assumed that productivity in the non-tradable sector develops similarly in all countries, and that the transmission mechanism from higher productivity in the tradable goods sector to higher prices of non-tradables is stable. This is fair compromise to capture two effects with one variable.

The sign of net foreign assets is ambiguous as pointed out earlier. A decrease in net foreign assets results in an appreciation of the real exchange rate during the adjustment process if the desired stock of net foreign assets is negative. The relationship becomes negative once the desired NFA position is reached.

Finally, in a further extension, net foreign assets, relative prices and productivity are all considered in one single specification to see whether the productivity variable and the relative price variable vehicle a different set of information. As long as they both enter the equation significantly and with the correct sign, the productivity variable would describe the effect of non-price-competitiveness on tradable prices, whereas the CPI-to-PPI ratio would stand both for the above-mentioned four factors and for the Balassa-Samuelson effect:

$$q^{CPI} = f(\overset{-}{prod}, \overset{-}{rel}, \overset{+/-}{nfa}) \quad (5)$$

Figure 1. The transmission from productivity and the CPI-to-PPI ratio to the real exchange rate



3.3 Data Sources and Definitions

The dataset covers 35 countries, of which 15 are small, open, industrialised OECD economies¹⁰, 8 emerging market economies from Asia and the Americas¹¹, and 11 transition economies from Central and Eastern Europe.¹² Cyprus is also included in the dataset. On the basis of the 35 countries, the following panels were considered: (1) OECD countries, (2) emerging countries of Asia and the Americas, (3) transition economies from Central and Eastern Europe. Because we are concerned primarily with real exchange rates for the transition economies, we further divided the panel of 11 transition economies in order to account for possibly significant differences between the transition countries. For example, Bulgaria and Romania are less advanced in their reforms than the new EU member states, and together with the Baltic countries they have experienced higher real appreciation compared with the rest. Therefore, two further panels were formed: (4) CEEC5 plus the 3 Baltic countries and (5) only CEEC5. Panel (6) contains all mentioned countries. Finally, panel (7) contains all countries plus Cyprus, which was difficult to put into any of the specific panels. The period spans from 1970 to 2002 for panel (1) and Cyprus. However, for some of the countries, some of the series begin later. For panel (2), time series usually begin between 1980 and 1990 and end in 2002. Regarding transition economies, the datasets span from 1992/1993 to 2002.¹³ All data are quarterly; the definition of variables and data sources are given in the Appendix.

Table 1. Overview of panels

Panel 1	15 OECD countries
Panel 2	8 emerging countries
Panel 3	11 CEE transition countries
Panel 4	8 transition countries (CEEC5+B3)
Panel 5	CEEC5
Panel 6	<i>Panel 1 + Panel 2 + Panel 3</i>
Panel 7	<i>Panel 6 + Cyprus</i>

The real effective exchange rate is a weighted average of the real exchange rate vis-à-vis the US economy and the euro area¹⁴. Germany and France are taken as a proxy for the euro

¹⁰Austria, Australia, Belgium, Denmark, Netherlands, Sweden, Canada, Finland, Greece, Ireland, Portugal, Spain, New Zealand, South Africa and South Korea. Although South Africa is not an OECD country, its economic structure may be considered for the most part of the sample as rather similar to that of Australia and New Zealand.

¹¹Brazil, Chile, Mexico, Indonesia, Malaysia, Singapore, Thailand, Turkey.

¹² Bulgaria, Croatia, Czech Republic, Hungary, Poland, Slovakia, Slovenia, Estonia, Latvia, Lithuania, Romania.

¹³ For more details on data sources and available time periods, see Appendix 1.

¹⁴ In doing so, we do not consider the rest of the world, which implicitly suggests that real exchange rate adjustments, if any, are to be made against the euro (mostly) and the dollar (marginally). This hypothesis, although apparently restricting, matches both the increasing orientation of transition countries economies towards the euro area, and the future of EMU participation, which will leave asymmetric shocks to be adjusted through the relative prices against other EMU countries. See Bénassy-Quéré et al. (2004) for developments about the inclusion/exclusion of the rest of the world in real effective equilibrium exchange rates estimations.

area, where the weights correspond to the relative size of French and German GDP (40 and 60 per cent, respectively). The weights allocated to the US and the euro area are given by the trade patterns of the given economy.

Table 2. Share of EU15 and US in AC total trade (in %), 1996-2001 average

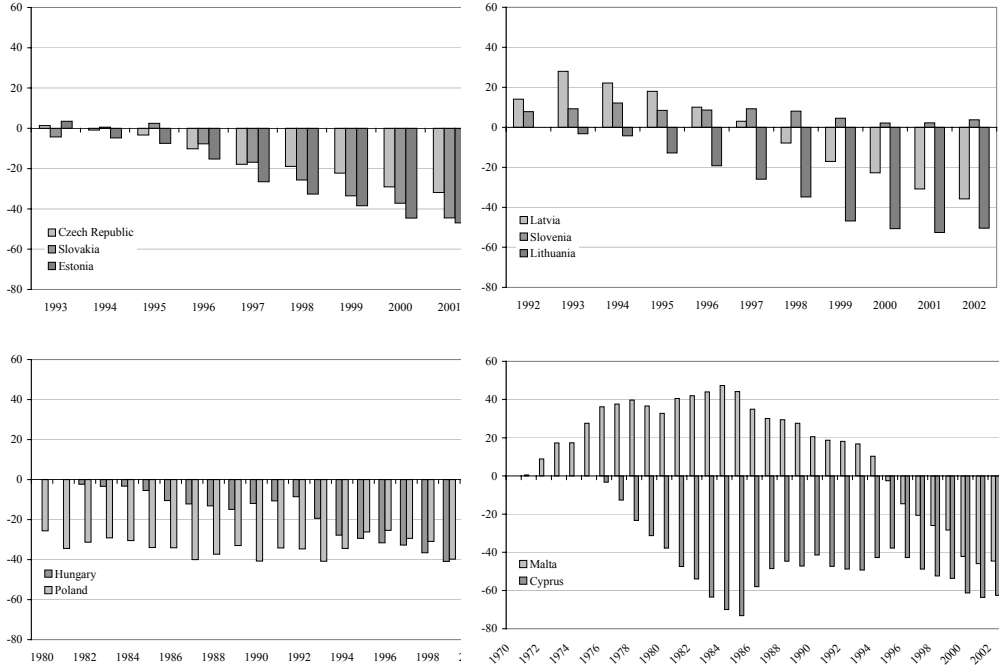
	EU 15	US	Total
Czech Rep.	0.66	0.02	0.68
Estonia	0.63	0.04	0.67
Hungary	0.69	0.04	0.73
Latvia	0.55	0.05	0.60
Lithuania	0.47	0.02	0.49
Poland	0.68	0.02	0.70
Slovakia	0.52	0.01	0.53
Slovenia	0.70	0.02	0.72

Source: Chelem-Cepii database

The other series are calculated as follows:

- (a) average labour productivity in industry is computed as industrial production to employment in industry.
- (b) the relative price of non-tradables to tradables is approximated by the CPI to PPI ratio. All variables are calculated as the domestic to foreign series ratio.
- (c) Net foreign assets are constructed as cumulated current account deficits/surpluses expressed in terms of GDP. All variables are taken in natural logarithms and are interpolated from yearly to quarterly frequency. Net foreign assets are transformed so as to keep observations non-negative: $\ln(1 + (NFA/GDP)/100)$.

Figure 2. Net foreign assets in % of GDP



3.4 Econometric Issues

The first step of the cointegration analysis is to ascertain that the series are non-stationary in level. For this purpose, the panel unit root test proposed by Im et al. (2003) (IPS test henceforth) is used. The advantage of the IPS test is that it allows for heterogeneity in the autoregressive coefficient across the countries of the panel. Consider the following equation assuming a trend and a constant term:

$$\Delta y_{i,t} = \pi_i \cdot y_{i,t-1} + \sum_{t=1}^{n-1} b_i \cdot \Delta y_{i,t-1} + \mu_i + \gamma_i \cdot t + \varepsilon_{i,t}, \quad i = 1, 2, \dots, N, \quad t = 1, 2, \dots, T, \quad (6)$$

The null of $H_0 : \pi_i = 0$ for each i is tested against the alternative hypothesis of $H_1 : \pi_i < 0, i = 1, 2, \dots, N$. The t-bar statistics is determined as the mean of individual ADF statistics, and is then compared with a set of critical values provided in Im et al. (2003).

The coefficients of the long-term relationships are derived by using (1) fixed effect OLS, (2) the mean group of individual dynamic OLS estimates (DOLS) (3) mean group of individual estimates based on the error-correction specification of the ARDL process

proposed by Pesaran et al. (1999), and (4) the pooled mean group estimator based on the ARDL.

The dynamic OLS can be written for each member of the panel as follows:

$$Y_{i,t} = \beta_0 + \sum_{i=1}^n \beta_n X_{i,t} + \sum_{i=1}^n \sum_{j=-k_1}^{k_2} \gamma_{i,j} \Delta X_{i,t-j} + \varepsilon_t \quad (7)$$

with k_1 and k_2 denoting respectively leads and lags for panel member i .

The error correction form of the ARDL model is given for panel member i as shown in equation (8) where the dependent variable in first differences is regressed on the lagged values of the dependent and independent variables in levels and first differences:

$$\Delta Y_{i,t} = \beta_0 + \rho(Y_{i,t-1} + \sum_{i=1}^n \beta_n X_{i,t-1}) + \sum_{j=1}^{l_1} \eta_j \Delta Y_{i,t-j} + \sum_{i=1}^n \sum_{j=0}^{l_2} \gamma_{i,j} \Delta X_{i,t-j} + \varepsilon_t \quad (8)$$

where l_1 and l_2 are the maximum lags. The pooled mean group estimator (PMGE) is first estimated with the short-term dynamic terms restricted across the members of the panels, and then with unrestricted short-run terms across panel members. In addition, the ARDL mean group estimator is also employed.

The error correction terms obtained from the mean group and pooled mean group estimators proposed by Pesaran et al. (1999) are used as tests for cointegration. A negative and statistically significant error correction term is taken as evidence for the presence of cointegration.

4. ESTIMATION RESULTS

4.1 The CPI-based Real Effective Exchange Rate

The IPS panel unit root tests indicate that most series are non-stationary in level, but become stationary after differentiation. Thus, the panel cointegration techniques can be applied to the data. Equations (3) and (3') are estimated for the 7 panels described earlier.¹⁵ For the panel including OECD countries, the tests are carried out for 7 periods so as to check for stability of the estimation results. The periods 1970-2002, 1975-2002, 1980-2002 and 1970-1990 yield very similar results, and therefore only those for 1975 to 2002 are reported here.

In general, there appears to be a great deal of heterogeneity across countries of the sub-panels because the fixed-effect OLS and the PMGE, which impose homogeneity on the long-run coefficients, are of poor quality. In a number of cases, the error correction terms

¹⁵ Three lag structures are used for the mean group DOLS and ARDL. First, we impose 1 lag and 1 lead for panel DOLS and 1 lag for ARDL. Then, lags and leads are chosen on the basis of Akaike and Schwartz information criteria. As results are very similar, only the estimates based on the Schwarz information criterion are reported. Moreover, only results for the CEE11 and CEE5 are shown, as they are similar to what is obtained using different sub-partitions of the CEE data set. Complete results are displayed in Appendix 3.

for the PMGE turn out to be statistically insignificant and/or to have a positive sign, indicating the absence of an error correction mechanism towards long-run equilibrium. By contrast, the DOLS and ARDL mean group estimators seem to confirm our expectations both in terms of significance, signs and the error correction term. Given this, we will concentrate on the interpretation of the estimates obtained on the basis of the panel DOLS and MG estimators. Results for tests based on the CPI-based real exchange rate are displayed in Table 3.

Tests can establish cointegration for the specifications with the productivity series and the CPI-to-PPI price ratio. For the group of OECD countries, productivity in industry has the expected negative sign, meaning that an increase in productivity causes the real exchange rate to appreciate. Although the CPI-to-PPI ratio also has a negative sign, the size of it is considerably higher in absolute terms (-0.7 to -1.2) than that of the two productivity variables (-0.16 to -0.2). This is a first indication that the variables may convey different information.¹⁶ Net foreign assets are also correctly (negatively) signed and are statistically significant except when the CPI-to-PPI ratio is used. Thus, an increase in net foreign assets leads to an appreciation of the real exchange rate. It should be noted that results obtained using DOLS are in general of better quality as those based on MGE because in a number of cases, some variables are not significant using the MGE.

With regard to the group of emerging countries from Asia and South America, the two productivity variables and the CPI-to-PPI ratio bear the correct sign, i.e. an increase (decrease) leads to an appreciation (depreciation) of the real effective exchange rate. However, the absolute size of the variables is higher than for the OECD panel (1.2 to 1.5 for productivity in industry and the CPI to PPI ratio). By contrast, net foreign assets turn out insignificant in most cases, and when they are statistically significant, their sign differs.

Coming to the transition economies, we observe a high significance of the productivity variables. Similar to the OECD countries, the size of the CPI-to-PPI variable is much higher than the one of productivity in industry. Comparing the three panels (11 transition economies, CEEC5+B5, CEEC5), the elimination of Bulgaria, Croatia and Romania, and then the three Baltic countries leads to a decrease in the size of the CPI-to-PPI variable and to a rise in the size of productivity in industry. In contrast to the group of emerging countries, the net foreign assets variable is mostly significant at standard significance levels. However, the sign of this variable is always positive.

Finally, the estimation results are very similar for the last two panels. This means that the inclusion of Cyprus to the other countries does not affect the overall results. For this reason, we only report results for the panel including the OECD, emerging and transition countries and Cyprus (panel (7)). The results are something of a mixture of the three panels analysed

¹⁶ The CPI to PPI ratio should be connected to relative productivity by a multiplicative factor, which accounts for the weight of the non-tradable sector in the economy : $(1-\alpha)$, where α is the weight of the tradable sector. According to our estimates, the implicit weight of the tradable sector would range between 50% and 0%. The usually accepted figure is around 30%, which matches neither estimate. This is an indication that both variables convey different information. Moreover, in the emerging countries and CEE panels, the estimated parameters do not allow to infer implicit weights for the tradable sector, which is a further indication of both variables relying to different phenomena.

above. The productivity variables are significant and correctly signed with a size somewhere between those obtained for the OECD panel, on the one hand, and for the emerging and transition economies, on the other hand. The net foreign assets variable turns out to be positive as in the transition countries panel. This is probably because in the emerging market panel some countries may also have recorded appreciation alongside foreign debt growth. In addition, higher net foreign assets may also be connected to a depreciation, if the movements towards a higher net foreign assets position dominates the effect of subsequent income flows, which may be the case in some of the countries in the OECD panel.

4.2 The Sign on Net Foreign Assets for Transition Economies

The increasing empirical literature on equilibrium exchange rates is not conclusive regarding the sign of net foreign assets relative to the real exchange rate. For instance, Burgess et al. (2003) find a positive sign between NFA and the real exchange rate for the three Baltic states: a decrease (increase) in the NFA position causes the real exchange rate to appreciate (depreciate). Alonso-Gamo et al. (2002) and Lommatzsch and Tober (2002) come to the same conclusion for Lithuania, and for the Czech Republic, Hungary and Poland, respectively, as Alberola (2003) does for the case of the Czech Republic. By contrast, Hinnosar et al. (2003) find a negative sign for Estonia, and Rahn (2003) for Czech Republic, Estonia, Hungary, Poland and Slovenia, i.e. a decrease (increase) in the NFA position causes the real exchange rate to depreciate (appreciate). Alberola (2003) comes to the same conclusion for Hungary and Poland. Csajbók (2003), Darvas (2001) and Bitans and Tillars (2003) confirm these findings. Using a small panel of transition countries, MacDonald and Wojcik (2002) suggest that the sign changes in function of the estimated equation.

Our results indicate that net foreign assets have a very robust positive link to the real exchange rate for transition economies, and to a lesser extent for emerging countries. In contrast with this finding is the observation that NFA bear a strong negative tie to the real exchange rate for a set of small, open OECD countries. This appears to be a major piece of evidence for the explanation provided in Égert (2003), according to which in the medium to long term, NFA may be positively linked to the real exchange rate, but the direction of this link changes in the longer run. Within the framework of the stock-flow asset model of the real exchange rate shown earlier, this can be explained by the fact that in the medium run, transition economies are moving towards their desired stock of foreign assets because the higher growth potential cannot be financed by domestic savings only and the use of foreign savings implies the accumulation of foreign liabilities. However, in the long run, the desired level of foreign assets is achieved, and payments on the existing stock of foreign liabilities would reverse the relationship: the higher the stock of foreign liabilities, the higher the need for real exchange rate depreciation to service the debt through an improved trade account, and vice versa. This is exactly what we observe for the average of the OECD countries.

Table 3. The CPI-based real effective exchange rate; $q^{CPI} = f(prod, nfa)$

	DOLS	DOLS_AIC	DOLS_SIC	MGE	MGE_AIC	MGE_SIC	No. OBS
OECD							
COINT				-0.043***	-0.041***	-0.042***	1554
PROD	-0.165***	-0.166***	-0.160***	0.083	-0.140	0.124	
NFA	-0.076***	-0.075***	-0.074***	-0.224***	-0.236***	-0.235***	
COINT				-0.054***	-0.051***	-0.052***	1590
REL	-0.745***	-0.760***	-0.763***	-1.132***	-1.214***	-0.744***	
NFA	0.037	0.035	0.035	-0.495	-0.513*	-0.088	
EMERGING MARKET ECONOMIES							
COINT				-0.034***	-0.036***	-0.033***	564
PROD	-1.481***	-1.486***	-1.217***	-1.841***	-1.769***	-1.858*	
NFA	-0.359	-0.361	-0.340	-0.078	0.049	0.063	
COINT				-0.054***	-0.054***	-0.054***	704
REL	-1.443***	-1.450***	-1.449***	-1.479***	-1.479***	-1.479***	
NFA	-0.205	-0.209	-0.192	-0.276	-0.276	-0.276	
CEEC11							
COINT				-0.138***	-0.148***	-0.148***	423
PROD	-0.455***	-0.471***	-0.437***	-0.045*	-0.017***	-0.024***	
NFA	0.627***	0.631***	0.569***	0.343***	0.379***	0.540***	
COINT				-0.103***	-0.086***	-0.088***	427
REL	-1.479***	-1.656***	-1.663***	-1.161***	-0.476***	-0.510***	
NFA	0.437***	0.374***	0.376***	0.202***	0.294***	0.243***	
CEEC5							
COINT				-0.174***	-0.199***	-0.197***	197
PROD	-0.780***	-0.736***	-0.736***	-0.760***	-0.824***	-0.790***	
NFA	0.121***	0.172***	0.176***	0.150**	0.115	0.156	
COINT				-0.100***	-0.086***	-0.089***	197
REL	-0.949***	-0.994***	-1.036***	-1.046**	-1.128***	-1.216***	
NFA	0.423***	0.397***	0.398***	0.124***	0.246*	0.125	

Notes DOLS_SIC are the DOLS estimates obtained on the basis of the Schwarz information criterion. The same applies to the mean group estimators (MGE_SIC). *, ** and *** denote respectively statistical significance at the 10%, 5% and 1% levels. In the row "coint" under MGE_SIC and PMGE are shown the error correction terms.

4.3 The PPI-based Real Effective Exchange Rate

In a second step, equations (4) and (4') are used which connect the real effective exchange rate deflated by the PPI – which proxies tradable goods prices – to productivity / the CPI-to-PPI ratio and net foreign assets. The aim of this series of exercises is to investigate the impact of productivity on the real exchange rate of the open sector.

For the OECD countries, the productivity variables switch sign and become positive, but remain statistically significant. Both an increase in average labour productivity and in the CPI-to-PPI ratio leads to a depreciation of the tradable price-deflated real exchange rate. This is in line with prediction of NOEM models.

In contrast to the OECD panel, for the transition and emerging countries both average productivity and the CPI-to-PPI ratio have the same effect on the real exchange rate of the open sector as for the CPI-based real exchange rate: an increase (decrease) in the productivity and relative price variables leads to an appreciation (depreciation) of the tradable price-based real exchange rate. This confirms largely the hypothesis that – at least during the catching-up process – the labour productivity variable is a proxy for increasing non-price competitiveness.

The sign of net foreign assets is in all panels the same as the one determined for the CPI-based real exchange rates: leading to appreciation in the OECD countries and to a depreciation in the transition countries.

Table 4. The PPI-based real exchange rate, $q^{PPI} = f(\overset{+/-}{prod}, \overset{+/-}{nfa})$

	DOLS	DOLS AIC	DOLS SIC	MGE	MGE AIC	MGE SIC	No. OBS
OECD							
COINT				-0.063***	-0.061***	-0.061***	1534
PROD	0.015***	0.021***	0.013***	0.013***	0.043***	0.023***	
NFA	-0.124***	-0.125***	-0.120***	-0.203***	-0.207***	-0.194***	
COINT				-0.054***	-0.052***	-0.053***	1590
REL	0.253***	0.239***	0.234***	0.057***	0.541***	0.012***	
NFA	-0.030	-0.028	-0.028	-0.226	-0.771**	-0.217*	
EMERGING MARKET ECONOMIES							
COINT				-0.056***	-0.057***	-0.056***	564
PROD	-1.159***	-1.121***	-1.087***	-1.182***	-1.267***	-1.271***	
NFA	0.257**	0.239**	0.219*	0.950	0.783	0.784	
COINT				-0.054***	-0.054***	-0.054***	704
REL	-0.446***	-0.453***	-0.452***	-0.472***	-0.472***	-0.472***	
NFA	-0.206	-0.210	-0.193*	-0.278	-0.278	-0.278	
CEEC11							
COINT				-0.138***	-0.151***	-0.150***	423
PROD	-0.350***	-0.358***	-0.319***	-0.028***	-0.373***	-0.354***	
NFA	0.456***	0.460***	0.408***	0.300***	0.258**	0.410***	
COINT				-0.102***	-0.102***	-0.104***	427
REL	-0.478***	-0.656***	-0.662***	-0.007	-0.056	-0.218	
NFA	0.438***	0.375***	0.377***	0.092***	0.180***	0.387***	
CEEC5							
COINT				-0.175***	-0.198***	-0.193***	197
PROD	-0.641***	-0.599***	-0.566***	-0.555***	-0.621***	-0.591***	
NFA	0.140***	0.093***	0.043***	0.036	-0.075	-0.057	
COINT				-0.104***	-0.096***	-0.101***	197
REL	-0.052***	-0.007***	-0.035***	-0.201	-0.206	-0.159*	
NFA	0.424***	0.398***	0.399***	0.088**	0.074*	0.087*	

Notes as for Table 3.

4.4 The extended specification: productivity, relative prices and net foreign assets

As a next step, the baseline specification including the (CPI-based) real exchange rate and two explanatory variables is extended in accordance with equation (5): the real exchange rate is regressed on labour productivity, the CPI-to-PPI ratio and net foreign assets. The results are presented in Table 5. Estimates of the baseline specifications have suggested that the CPI-to-PPI ratio may be a reasonable proxy for labour productivity, as they were found significant and had the correct negative sign. However, the size of the coefficients varies considerably. In most of the extended specifications, both productivity and the CPI-to-PPI ratio enter the regression significantly. This suggests the absence of multi-collinearity between productivity and the CPI-to-PPI ratio. In the transition countries panel they enter with the same sign, whereas they have opposite signs in the OECD panel. Thus, the two variables seem to vehicle a different set of information. Productivity can stand for higher non-price competitiveness (mainly for the transition countries), but it can also reflect the need for real depreciation with higher growth to maintain external balance (as in the OECD panel, where the sign of labour productivity in industry becomes positive conditioned on the CPI-to-PPI ratio). This is what we would expect on the basis of NOEM models and is in line with the findings in MacDonald and Ricci (2002) and Lee and Tang (2003). The B-S effect, captured through the CPI-to-PPI ratio causes the real exchange rate to appreciate through the internal real exchange rate, whereas an increase in productivity in the open sector leads to a real depreciation of the open sector's real exchange rate. The CPI-to-PPI ratio may stand for the B-S effect, but it may also represent the factors enumerated earlier, such as indirect taxes or regulated prices. It should be noted that net foreign assets are robust, especially for the transition economies, to the simultaneous inclusion of productivity and relative prices.

Table 5. Extended specification, $q^{CPI} = f(\overset{-}{prod}, \overset{-}{rel}, \overset{+/-}{nfa})$

	DOLS	DOLS_AIC	DOLS_SIC	MGE	MGE_AIC	MGE_SIC	No. OBS
OECD							
COINT				-0.073***	-0.070***	-0.070***	1534
PROD	0.016***	0.011***	0.016***	0.105	0.103	0.064	
REL	-0.811***	-0.811***	-0.803***	-0.501***	-0.584***	-0.610***	
NFA	-0.012	-0.019*	-0.020*	-0.184	-0.198**	-0.124*	
EMERGING MARKET ECONOMIES							
COINT				-0.074***	-0.074***	-0.074***	564
PROD	-1.264***	-1.197***	-1.168***	-2.864*	-1.737	-1.560	
REL	-1.332***	-1.349***	-1.365***	-0.472***	-1.045***	-1.144***	
NFA	-0.314	-0.295	-0.257	-1.298	-0.543	-0.574	
CEEC11							
COINT				-0.106***	-0.143***	-0.112***	423
PROD	-0.514***	-0.488***	-0.486***	-0.124	-0.077***	-0.007*	
REL	-1.502***	-1.657***	-1.652***	-1.241	-0.795**	-0.904	
NFA	0.276***	0.179***	0.190***	0.192***	0.184***	0.046***	
CEEC5							
COINT				-0.187***	-0.197***	-0.173***	197
PROD	-0.475***	-0.459***	-0.454***	-0.248***	-0.389***	-0.306***	
REL	-0.485***	-0.491***	-0.479***	-1.100***	-0.863***	-0.983***	
NFA	0.181***	0.202***	0.226***	0.138*	0.085*	0.030	

Notes as for Table 3

4.5 In-Sample vs. Out-of-Sample Panel Estimates: Constant Terms or Parameter Values?

In a recent paper, Maeso-Fernandez et al. (2004) argue that in-sample panel estimates are biased if the real exchange rate is undervalued at the beginning of the sample period.¹⁷ Therefore, they propose to compute out-of-sample measures of the equilibrium real exchange rate for accession countries. Estimates are run on a benchmark panel, which does not include the countries which are suspected to have undervalued real exchange rates at the beginning of the period. Parameter estimates are then applied to these countries (hence, it is an out-of-sample measure of the real exchange rate).

One obvious difficulty with such an approach relates to the computation of constant terms for the “in-sample” countries, as country specific constant terms cannot be derived from the out-of-sample.¹⁸ There is another difficulty however, which is evidenced by the sensitiveness of parameter values to the composition of the geographical sample. Depending on the countries included in the sample, our results show that estimated coefficients can change dramatically. At least on the basis of the stock-flow approach, this result strongly questions the economic meaning of equilibrium exchange rate measures, which rest only on out-of-sample estimates.

Indeed, while out-of-sample estimates mirror long-term behaviour – and can be difficult to interpret in policy terms –, in-sample estimates may reflect medium-term developments and therefore trace the equilibrium development more appropriately for policy purposes.

Therefore, out-of-sample estimates alone do not allow to assess the degree of misalignment of a currency because of the strong heterogeneity between the panel for which the estimations are performed and the countries for which those estimations are applied. When this is not the case, in-sample estimates are useful to assess whether the observed long-run misalignment is compensated by a medium-run equilibrium, or whether it is both a long-run and medium-term misalignment.

¹⁷ Maezo-Fernandez et al. (2004) regress the real exchange rate on productivity, openness and government expenditures.

¹⁸ Maezo-Fernandez et al. propose to estimate the constant terms by using either (1) the average of constant terms of the sample, (2) the average constant of the converging euro area countries, such as Greece, Portugal and Spain, or (3) the lowest constant term of the euro area countries. Note, however that these strategies do not allow for the case when the country-specific constant terms are outside the range given by the out-of-sample panel.

5. CONCLUSION

In this study, we used the stock-flow approach to the equilibrium exchange rate proposed by Alberola et al. (1999, 2002) to determine long-term factors driving the real exchange rate and compare results from in-sample and out-of-sample estimates. We also follow Aglietta et al. (1998) by taking into account the impact of non-price competitiveness on equilibrium real exchange rate developments. A number of conclusions arise from our empirical analysis.

Firstly, we show that the normally positive relationship between net foreign asset accumulation and real exchange rate appreciation is not a general feature of small open economies. A number of papers had already shown that a decrease in net foreign assets yields an appreciation of the real exchange rate in transition economies. Using panel cointegration techniques, and splitting our sample into smaller and more homogeneous subsamples, we show that an improving net foreign asset position does correspond to a real exchange rate appreciation for a group of small and open OECD countries. By contrast, a decrease in net foreign assets is found to be systematically linked to a real appreciation of the exchange rate for different groups of transition economies.

We suggest that the systematically different sign of net foreign assets may be related to the time period studied, i.e. the distinction between the medium run and the long run. The 30-year period for the OECD countries may be viewed as the long term, whereas the slightly more than 10-year period for the transition economies can be considered as the medium run, i.e. convergence towards a long-term level. According to the model, in the long run, net foreign assets are assumed to have reached their desired level. Therefore, an increase in net foreign assets implies an appreciation of the real exchange rate because higher net foreign assets mean higher inflows of income. However, the medium run is characterised by the adjustment of net foreign assets to their desired level. If countries desire a negative stock of net foreign assets (which seems to be the case in the transition economies), they run current account deficits and record a real appreciation of the exchange rate.

Secondly, the sources of CPI-based real exchange rate appreciation differ between groups of countries. Real exchange rate in OECD countries are found to behave in line with predictions of NOEM models implying that the B-S effect causes the real exchange rate to appreciate whilst productivity gains in the open sector result in a depreciation of the open sector's real exchange rate. In contrast to this stand our findings for transition economies, where the real exchange rate appreciates not only because of B-S type of factors but also because of the appreciation of the open sector driven by improving non-price-competitiveness.

Thirdly, our results indicate that the CPI-to-PPI ratio is an imperfect proxy for relative prices when measuring the B-S effect because this ratio not only reflects the relative price of market-based non-tradable goods but also a number of other factors. Moreover, it is not appropriate to use the CPI-to-PPI ratio (and relative prices in general) as a proxy for relative productivity in transition economies because it cannot fully convey the effect of productivity gains to the real exchange rate, i.e. the appreciation of the real exchange rate of the open sector.

Finally, we show that sizeable differences exist between in-sample (transition economies and all countries put together) and out-of-sample (OECD countries), as regards the sign and the size of the estimated coefficients. This suggests that both measures offer complementary information on equilibrium exchange rates. Equilibrium rates derived from the panel of OECD countries give an insight on the long run for the transition economies, but may be less easily interpreted for policy purposes.

REFERENCES

- Aglietta, M., C. Baulant and V. Coudert (1998), "Why the euro will be strong: An approach based on equilibrium exchange rates", *Revue Economique*, 49(3), 721-731.
- Alberola, E. (2003), "Real Convergence, External Disequilibria and Equilibrium Exchange Rates in EU Acceding Countries", Banco de España, mimeo.
- Alberola, E., S. G. Cervero, H. Lopez and A. Ubide (1999), "Global Equilibrium Exchange Rates: Euro, Dollar", "Ins," "Outs," and Other Major Currencies in a Panel Cointegration Framework, *IMF Working Paper* No. 175.
- Alberola, E., S. G. Cervero, H. Lopez and A. Ubide (2002), "Quo vadis Euro?" *The European Journal of Finance*, 8, 352-370.
- Alonso-Gamo, P., S. Fabrizio, V. Kramarenko and Q. Wang (2002), "Lithuania: History and Future of the Currency Board Arrangement", *IMF Working Paper* No. 127.
- Backé, P., J. Fidrmuc, T. Reininger and F. Schardax (2003), "Price dynamics in Central and Eastern European EU Accession Countries", *Emerging Markets Finance and Trade* 39(3). 42-78.
- Bénassy-Quéré, A., Duran-Vigeneron, P., Mignon, V. and A. Lahrière-Révil (2004), "Distributing Key Currency Adjustment: A G-200 Panel Cointegration Approach", *CEPII working paper No. 2004-13*, September.
- Benigno, G. and C. Thoenissen (2003), "Equilibrium Exchange Rates and Capital and Supply Side Performance", *Economic Journal*, 113(486), 103-124.
- Bitans, M. and I. Tillers (2003), "Estimates of Equilibrium Exchange Rate in Latvia". Bank of Latvia, mimeo.
- Burgess, R., Fabrizio, S. and Y. Xiao (2003), "Competitiveness in the Baltics in the Run-Up to EU Accession", *IMF Country Report* No. 114.
- Coricelli, F. and B. Jazbec (2004), "Real Exchange Rate Dynamics in Transition Economies". *Structural Change and Economic Dynamics*, 15 (1), 83-100.

- Csajbók, A. (2003), “The Equilibrium Real Exchange Rate in Hungary: Results from Alternative Approaches”. Paper presented at the 2nd *Workshop on Macroeconomic Policy Research*, National Bank of Hungary, October 2–3.
- Crespo-Cuaresma, J., J. Fidrmuc and R. MacDonald (2004), “The Monetary Approach to Exchange Rates in the CEECs”, *William Davidson Institute Working Paper* No. 642.
- Darvas, Zs. (2001), “Exchange Rate Pass-Through and Real Exchange Rate in EU Candidate Countries”, *Economic Research Centre of the Deutsche Bundesbank Discussion Paper* No. 10.
- Égert, B. (2002), “Investigating the Balassa-Samuelson Hypothesis in the Transition: Do We Understand What We See? A Panel Study”, *Economics of Transition* 10(2). 273–309.
- Égert, B. and K. Lommatzsch (2004), “Equilibrium Exchange Rate in the Transition: The Tradable Price-Based Appreciation and Estimation Uncertainty”, *William Davidson Institute Working Paper* No. 676
- Égert, B., I. Drine, K. Lommatzsch and Ch. Rault (2003), “The Balassa-Samuelson Effect in Central and Eastern Europe: Myth or Reality?”, *Journal of Comparative Economics* 31(3), 552–572.
- Faruquee, H. (1995), “Long-Run Determinants of the Real Exchange Rate: A Stock-Flow Perspective”, *IMF Staff Papers*. 42(1), 80-107.
- Frenkel, J.A and M. L. Mussa (1985), “Asset Markets, Exchange Rates and the Balance of Payments”. In R. W. Jones and P.B. Kenen (eds). *Handbook of International Economics*. 2. North-Holland, Amsterdam, 679-747.
- Halpern, L. and Ch. Wyplosz (2001), “Economic Transformation and Real Exchange Rates in the 2000s: The Balassa-Samuelson Connection”, *UNO Economic Survey of Europe*, 227–239.
- Hinnosar, M., R. Juks, H. Kaadu and L. Uusküla (2003), “Estimating the Equilibrium Exchange Rate of the Estonian Kroon”, Bank of Estonia, mimeo.
- Im, K. S., M. H. Pesaran and Y. Shin (2003), “Testing for unit roots in heterogeneous panels”. *Journal of Econometrics*. 115(1), 53–74.
- Kim, B. Y. and I. Korhonen (2002), “Equilibrium Exchange Rates in Transition Countries: Evidence from Dynamic Heterogeneous Panel Models”, *BOFIT Discussion Paper* No. 15.
- Krugman, P. (1989), “Differences in Income Elasticities and Trends in Real Exchange Rates”, *European Economic Review*. 33 (5). 1031-1054.

- Lane, Ph. And G. M. Milesi-Ferretti (2002), "External Wealth, the Trade Balance and the Real Exchange Rate". *CEPR Discussion Paper* No. 3153.
- Lee, J. and M. K. Tang (2003), "Does Productivity Growth Lead to Appreciation of the Real Exchange Rate?", *IMF Working Paper* 154.
- Lommatzsch, K. and S. Tober (2002), "What Is behind the Real Appreciation of the Accession Countries' Currencies? An Investigation of the PPI-Based Real Exchange Rate". Presented at "Exchange Rate Strategies during the EU Enlargement." Budapest. 27 – 30 November.
- Lommatzsch, K. and S. Tober (2004), "The inflation target of the ECB: Does the Balassa-Samuelson effect matter?", DIW-Berlin, mimeo.
- MacDonald, R. and L. Ricci (2002), "Purchasing Power Parity and New Trade Theory", *IMF Working Paper* No. 32.
- MacDonald, R. and C. Wójcik (2004), "Catching Up: The Role of Demand, Supply and Regulated Price Effects on the Real Exchange Rates of Four Accession Countries", *Economics of transition*, 12(1), 153-179.
- Maeso-Fernandez, F., Ch. Osbat and B. Schnatz (2004), "Towards the Estimation of Equilibrium Exchange Rates for CEE Acceding Countries: Methodological Issues and a Panel Cointegration Perspective", *ECB Working Paper* No. 353.
- Mihaljek, D. and M. Klau (2004), "The Balassa-Samuelson Effect in Central Europe: A Disaggregated Analysis", *Comparative Economic Studies*, 46(1), 63-94.
- Pesaran, M. H., Y. Shin and R. J. Smith (1999), "Pooled mean group estimation of dynamic heterogeneous panels", *Journal of the American Statistical Association*, 94, 621-634.
- Rahn, J. (2003), "Bilateral Equilibrium Exchange Rates of the EU Accession Countries Against the Euro", *BOFIT Discussion Paper* No. 11.
- Rawdanowicz, Ł. W. (2003), "Poland's Accession to EMU: Choosing the Exchange Rate Parity". *CASE Studies&Analyses* 247. December 2002, and forthcoming in: De Souza, L.V. and B. Van Aarle (eds.). *The Euro Area and the New EU Member States*. New York: Palgrave Macmillan.
- Világi, B. (2004), "Dual Inflation and Real Exchange Rate in New Open Economy Macroeconomics", *National Bank of Hungary Working Paper* No. 5.

APPENDIX 1

DATA SOURCES AND DEFINITION

Real exchange rate

The real exchange rate compares domestic price indices to foreign ones, in the same currency. The bilateral real exchange rate is computed as follows: $Q = EP^*/P$, where E is the nominal exchange rate (source: IMF, *International Financial Statistics*, line 00rf), P and P* are respectively the domestic and foreign price index (source: IMF, *International Financial Statistics*, line 64). The series are normalised to 1993 (1993=100)

The real exchange rate is computed in effective terms:

$$REER = \alpha_{i/US} Q_{i/\$} + \alpha_{i/UE} Q_{i/EUR},$$

$$\text{where } \alpha_{i/US} = \frac{X_{i/US} + M_{i/EUR}}{(X_{i/US} + M_{i/US}) + (X_{i/EUR} + M_{i/EUR})} \text{ and}$$

$$\alpha_{i/UE} = \frac{X_{i/UE} + M_{i/EUR}}{(X_{i/US} + M_{i/US}) + (X_{i/EUR} + M_{i/EUR})}.$$

X and M are average bilateral exports and imports, taken from IMF *Direction of Trade Statistics*, and computed over 1990-2000. The euro area is approximated by a GDP-weighted average of Germany and France.

Productivity

Industrial productivity is computed using the IFS, OECD MEI and UNIDO database, reformatted by CEPII using INDSTAT2002 ISIC REV3, a UNO database of industrial production. We use

- Industrial production
- Industry employment

Industrial productivity is computed for each country i of the sample as well as for the US and Germany. Relative industrial productivity is therefore the ratio of country i 's industrial productivity to the trade-weighted average of the US and euro area industrial productivity. For Eastern European countries, quarterly data provided by the WIIW are used.

Net foreign assets

Net foreign assets data were computed by cumulating current account balances to NFA data (using IMF, *Balance of Payment Statistics*, line 78ald). Data are in dollars, and were normalised by national GDPs in the same currency (IMF, *International Financial Statistics*, line 99 and line 00rf).

APPENDIX 2 – DETAILED ESTIMATION RESULTS

Table 1. The CPI-based real effective exchange rate; $q^{CPI} = f^{+/-}(prod, nfa)$

	OLS	DOLS	DOLS_AIC	DOLS_SIC	MGE	MGE_AIC	MGE_SIC	PMGE	PMGE_un	No. Obs
OECD										
CoInt					-0.043***	-0.041***	-0.042***	0.003***	0.018	1554
prod	-0.021	-0.165***	-0.166***	-0.160***	0.083	-0.140	0.124			
Nfa	-0.027***	-0.076***	-0.075***	-0.074***	-0.224***	-0.236***	-0.235***			
CoInt					-0.054***	-0.051***	-0.052***	0.000***	-0.022***	1590
rel	-0.904***	-0.745***	-0.760***	-0.763***	-1.132***	-1.214***	-0.744***		-0.667***	
nfa	0.030***	0.037	0.035	0.035	-0.495	-0.513*	-0.088		-0.018	
EMERGING COUNTRIES										
coInt					-0.034***	-0.036***	-0.033***	-0.018*	-0.015	564
prod	-0.166***	-1.481***	-1.486***	-1.217***	-1.841***	-1.769***	-1.858*	-1.040*		
Nfa	-0.034	-0.359	-0.361	-0.340	-0.078	0.049	0.063	-0.552***		
CoInt					-0.054***	-0.054***	-0.054***	-0.005	-0.018***	704
rel	-1.672***	-1.443***	-1.450***	-1.449***	-1.479***	-1.479***	-1.479***		-1.732***	
nfa	0.119***	-0.205	-0.209	-0.192	-0.276	-0.276	-0.276		-0.072	
CEEC11										
CoInt					-0.138***	-0.148***	-0.148***	-0.071***	-0.028**	423
prod	-0.344***	-0.455***	-0.471***	-0.437***	-0.045*	-0.017***	-0.024***	-0.673***	-0.681**	
Nfa	0.742***	0.627***	0.631***	0.569***	0.343***	0.379***	0.540***	-0.141	0.114	
CoInt					-0.103***	-0.086***	-0.088***	0.043	-0.027	427
Rel	-1.809***	-1.479***	-1.656***	-1.663***	-1.161***	-0.476***	-0.510***			
Nfa	0.493***	0.437***	0.374***	0.376***	0.202***	0.294***	0.243***			
CEEC8										
coInt					-0.130***	-0.145***	-0.143***	-0.103***	-0.031***	308
prod	-0.191***	-0.417***	-0.431***	-0.430***	-0.289*	-0.183***	-0.133***	-0.668***	-0.639***	
Nfa	0.905***	0.535***	0.541***	0.544***	0.119*	0.158*	0.131	0.037	0.038	
CoInt					-0.101***	-0.085***	-0.088***	-0.098	-0.056***	308
rel	-2.279***	-2.042***	-2.009***	-2.035***	-1.676***	-1.310***	-1.355***		-1.608***	
Nfa	0.404***	0.274***	0.265***	0.266***	0.077*	0.174	0.104		0.158	
CEEC5										
coInt					-0.174***	-0.199***	-0.197***	-0.019***	-0.027**	197
prod	-0.589***	-0.780***	-0.736***	-0.736***	-0.760***	-0.824***	-0.790***	-1.506***	-0.732**	
Nfa	0.256***	0.121***	0.172***	0.176***	0.150**	0.115	0.156	-0.152	0.105	
CoInt					-0.100***	-0.086***	-0.089***	0.010	-0.014	197
Rel	-2.185***	-0.949***	-0.994***	-1.036***	-1.046**	-1.128***	-1.216***			
Nfa	0.195***	0.423***	0.397***	0.398***	0.124***	0.246*	0.125			
ALL (including Cyprus)										
coInt					-0.070***	-0.073***	-0.073***	0.027**		2646
prod	-0.196***	-0.570***	-0.573***	-0.498***	-0.394*	-0.450***	-0.465***			
Nfa	0.064***	0.084***	0.086***	0.071***	0.103	0.026	0.080			
CoInt					-0.068***	-0.062***	-0.063***	-0.011		2826
rel	-1.541***	-1.090***	-1.153***	-1.156***	-1.169***	-0.979***	-0.788***			
Nfa	0.117***	0.105***	0.084***	0.088***	0.215	-0.193	-0.027			

Notes: DOLS, DOLS_AIC, and DOLS_SIC are the DOLS estimates obtained on the basis of fixed lags and leads, and the ones chosen using the Akaike and Schwarz information criterion. The same applies to the mean group estimators (MGE, MGE_AIC, MGE_SIC). *, ***, and *** denote respectively statistical significance at the 10%, 5% and 1% levels. In the row "coInt" under MGE, MGE_AIC, MGE_SIC, PMGE and PMGE_unr are shown the error correction terms.

Table 2. The PPI-based real exchange rate, $q^{PPI} = f^{+/-} (prod, nfa)^{+/-}$

	OLS	DOLS	DOLS_AIC	DOLS_SIC	MGE	MGE_AIC	MGE_SIC	PMGE	PMGE_un	No. Obs
OECD										
Coint					-0.063***	-0.061***	-0.061***	0.010***	0.024***	1534
prod	0.089***	0.015***	0.021***	0.013***	0.013***	0.043***	0.023***			
Nfa	-0.010	-0.124***	-0.125***	-0.120***	-0.203***	-0.207***	-0.194***			
Coint					-0.054***	-0.052***	-0.053***	0.001***	0.022*	1590
rel	0.094***	0.253***	0.239***	0.234***	0.057***	0.541***	0.012***			
Nfa	0.027***	-0.030	-0.028	-0.028	-0.226	-0.771**	-0.217*			
Emerging countries										
Coint					-0.056***	-0.057***	-0.056***	-0.026***	-0.026	564
prod	-0.037	-1.159***	-1.121***	-1.087***	-1.182***	-1.267***	-1.271***	-0.829***		
Nfa	0.076***	0.257**	0.239**	0.219*	0.950	0.783	0.784	-0.302**		
Coint					-0.054***	-0.054***	-0.054***	-0.005	-0.018***	704
rel	-0.680***	-0.446***	-0.453***	-0.452***	-0.472***	-0.472***	-0.472***		-0.736***	
Nfa	0.118***	-0.206	-0.210	-0.193*	-0.278	-0.278	-0.278		-0.073	
CEEC11										
Coint					-0.138***	-0.151***	-0.150***	-0.050***	-0.026**	423
prod	-0.218***	-0.350***	-0.358***	-0.319***	-0.028***	-0.373***	-0.354***	-0.888***	-0.594**	
Nfa	0.569***	0.456***	0.460***	0.408***	0.300***	0.258**	0.410***	-0.312**	0.140	
Coint					-0.102***	-0.102***	-0.104***	0.043***	0.027	427
rel	-0.809***	-0.478***	-0.656***	-0.662***	-0.007	-0.056	-0.218			
Nfa	0.493***	0.438***	0.375***	0.377***	0.092***	0.180***	0.387***			
CEEC8										
coint					-0.133***	-0.148***	-0.146***	-0.096***	-0.039**	308
prod	-0.115*	-0.262***	-0.274***	-0.257***	-0.306***	-0.188***	-0.140***	-0.452***	-0.380**	
Nfa	0.682***	0.288***	0.294***	0.323***	0.204	0.138	0.117	0.065	0.210	
Coint					-0.102***	-0.101***	-0.104***	0.097*	-0.056	308
rel	-1.279***	-1.042***	-1.008***	-1.034***	-0.460***	-0.527**	-0.497**			
Nfa	0.405***	0.274***	0.266***	0.267***	0.069	0.053	0.061			
CEEC5										
Coint					-0.175***	-0.198***	-0.193***	-0.038***	-0.053***	197
prod	-0.397***	-0.641***	-0.599***	-0.566***	-0.555***	-0.621***	-0.591***	-0.921***	-0.487***	
Nfa	0.176***	0.140***	0.093***	0.043***	0.036	-0.075	-0.057	-0.021	0.126	
Coint					-0.104***	-0.096***	-0.101***	0.010	-0.014	197
rel	-1.186***	-0.052***	-0.007***	-0.035***	-0.201	-0.206	-0.159*			
Nfa	0.195***	0.424***	0.398***	0.399***	0.088**	0.074*	0.087*			
ALL (including Cyprus)										
coint					-0.084***	-0.087***	-0.087***	0.026		2626
prod	-0.066***	-0.392***	-0.381***	-0.364***	-0.271*	-0.409***	-0.395**			
Nfa	0.099***	0.035***	0.039***	0.030***	-0.257	-0.169	-0.223			
Coint					-0.068***	-0.067***	-0.068***	0.011*		2826
rel	-0.546***	-0.090**	-0.152***	-0.156***	0.050*	0.299*	0.024*			
Nfa	0.114***	0.102***	0.081***	0.085***	0.134	0.340	0.037			

Note : As for Table 1.

Table 3. Extended specification, $q^{CPI} = f(\overset{-}{prod}, \overset{-}{rel}, \overset{+/-}{nfa})$

	OLS	DOLS	DOLS_AIC	DOLS_SIC	MGE	MGE_AIC	MGE_SIC	PMGE	PMGE_un	No. OBS
OECD										
Coint					-0.073***	-0.070***	-0.070***	0.016***	0.023*	1534
prod	0.077***	0.016***	0.011***	0.016***	0.105	0.103	0.064			
Rel	-0.969***	-0.811***	-0.811***	-0.803***	-0.501***	-0.584***	-0.610***			
Nfa	-0.006	-0.012	-0.019*	-0.020*	-0.184	-0.198**	-0.124*			
Emerging										
Coint					-0.074***	-0.074***	-0.074***	-0.040***	-0.033	564
prod	0.051	-1.264***	-1.197***	-1.168***	-2.864*	-1.737	-1.560	-0.541***		
Rel	-1.690***	-1.332***	-1.349***	-1.365***	-0.472***	-1.045***	-1.144***	-0.082		
Nfa	0.154***	-0.314	-0.295	-0.257	-1.298	-0.543	-0.574	-0.255***		
CEEC11										
Coint					-0.106***	-0.143***	-0.112***	-0.051***	-0.023***	423
prod	-0.110*	-0.514***	-0.488***	-0.486***	-0.124	-0.077***	-0.007*	-1.099***	-0.924***	
Rel	-1.843***	-1.502***	-1.657***	-1.652***	-1.241	-0.795**	-0.904	0.887*	1.117	
Nfa	0.422***	0.276***	0.179***	0.190***	0.192***	0.184***	0.046***	-0.186	0.173	
CEEC8										
coint					-0.105***	-0.149***	-0.114***	-0.102***	-0.039***	308
prod	-0.017	-0.494***	-0.487***	-0.484***	-0.396	-0.108***	-0.235	-0.654***	-0.614***	
Rel	-2.273***	-2.033***	-2.059***	-2.052***	-1.865	-0.972***	-1.400	-0.057	-0.601	
nfa	0.397***	0.041***	0.031***	0.016***	0.088	0.087	0.289	0.054	0.021	
CEEC5										
coint					-0.187***	-0.197***	-0.173***	-0.027***	-0.037***	197
prod	-0.256***	-0.475***	-0.459***	-0.454***	-0.248***	-0.389***	-0.306***	-1.341***	-0.579***	
rel	-1.732***	-0.485***	-0.491***	-0.479***	-1.100***	-0.863***	-0.983***	0.181	-1.042	
Nfa	0.117***	0.181***	0.202***	0.226***	0.138*	0.085*	0.030	-0.022	0.096	
ALL (including Cyprus)										
Coint					-0.082***	-0.093***	-0.083***	0.031	2626.000	
Prod	-0.016	-0.474***	-0.445***	-0.439***	-0.627	-0.437	-0.348			
rel	-1.466***	-1.103***	-1.154***	-1.153***	-0.686***	-0.703***	-0.780***			
Nfa	0.119***	0.010***	0.019***	0.007***	-0.322	0.156	-0.177			

Note: As for Table 1

LIST OF WORKING PAPERS RELEASED BY CEPII¹⁹

<i>N°</i>	<i>Titre</i>	<i>Auteurs</i>
2004-14	Vieillesse démographique, épargne et retraite : une analyse à l'aide d'un modèle d'équilibre général à agents hétérogènes	C. Bac & J. Chateau
2004-13	Burden Sharing and Exchange-Rate Misalignments within the Group of Twenty	A. Bénassy-Quéré, P. Duran-Vigeneron, A. Lahrière-Révil & V. Migon
2004-12	Regulation and Wage Premia	S. Jean & G. Nicoletti
2004-11	The Efficiency of Fiscal Policies: a Survey of the Literature	S. Capet
2004-10	La réforme du marché du travail en Allemagne : les enseignements d'une maquette	S. Capet
2004-09	Typologie et équivalence des systèmes de retraites	P. Villa
2004-08	South – South Trade: Geography Matters	S. Coulibaly & L. Fontagné
2004-07	Current Accounts Dynamics in New EU members: Sustainability and Policy Issues	P. Zanghieri
2004-06	Incertitude radicale et choix du modèle	P. Villa
2004-05	Does Exchange Rate Regime Explain Differences in Economic Results for Asian Countries?	V. Coudert & M. Dubert
2004-04	Trade in the Triad: How Easy is the Access to Large Markets?	L. Fontagné, T. Mayer & S. Zignago
2004-03	Programme de travail du CEPII pour 2004	
2004-02	Technology Differences, Institutions and Economic Growth: a Conditional Conditional Convergence	H. Boulhol
2004-01	Croissance et régimes d'investissement	P. Villa
2003-23	A New Look at the Feldstein-Horioka Puzzle Using an Integrated Panel	A. Banerjee & P. Zanghieri

¹⁹ Working papers are circulated free of charge as far as stocks are available; thank you to send your request to CEPII, Sylvie Hurion, 9, rue Georges-Pitard, 75015 Paris, or by fax : (33) 01 53 68 55 04 or by e-mail Hurion@cepii.fr. Also available on: www.cepii.fr. Working papers with * are out of print. They can nevertheless be consulted and downloaded from this website.

¹⁹ Les documents de travail sont diffusés gratuitement sur demande dans la mesure des stocks disponibles. Merci d'adresser votre demande au CEPII, Sylvie Hurion, 9, rue Georges-Pitard, 75015 Paris, ou par fax : (33) 01 53 68 55 04 ou par e-mail Hurion@cepii.fr. Egalement disponibles sur : www.cepii.fr. Les documents de travail comportant * sont épuisés. Ils sont toutefois consultable sur le web CEPII.

2003-22	The US Economy in the 90s and its Repercussions on Canada, Eurozone and Japan	S. Capet, P. Zanghieri & JP. Laffargue
2003-21	Trade Linkages and Exchange-Rates in Asia : the Role of China	A. Bénassy-Quéré & A. Lahrière-Révil
2003-20	Economic Implications of Trade Liberalization Under the Doha Round	JF. Francois, H. Van Meijl & F. Van Tongeren
2003-19	Methodological Tools for SIA - Report of the CEPII Workshop held on 7-8 November 2002 in Brussels	
2003-18	Order Flows, Delta Hedging and Exchange Rate Dynamics	B. Rzepkowski
2003-17	Tax Competition and Foreign Direct Investment	A. Bénassy-Quéré, L. Fontagné & A. Lahrière-Révil
2003-16	Commerce et transfert de technologies : les cas comparés de la Turquie, de l'Inde et de la Chine	F. Lemoine & D. Ünal-Kesenci
2003-15	The Empirics of Agglomeration and Trade	K. Head & T. Mayer
2003-14	Notional Defined Contribution: A Comparison of the French and German Point Systems	F. Legros
2003-13	How Different is Eastern Europe? Structure and Determinants of Location Choices by French Firms in Eastern and Western Europe	A.C. Disdier & T. Mayer
2003-12	Market Access Liberalisation in the Doha Round: Scenarios and Assessment	L. Fontagné, J.L. Guérin & S. Jean
2003-11	On the Adequacy of Monetary Arrangements in Sub-Saharan Africa	A. Bénassy-Quéré & M. Coupet
2003-10	The Impact of EU Enlargement on Member States: a CGE Approach	H. Bchir, L. Fontagné & P. Zanghieri
2003-09	India in the World Economy: Traditional Specialisations and Technology Niches	S. Chauvin & F. Lemoine
2003-08	Imitation Amongst Exchange-Rate Forecasters: Evidence from Survey Data	M. Beine, A. Bénassy-Quéré & H. Colas
2003-07	Le Currency Board à travers l'expérience de l'Argentine	S. Chauvin & P. Villa
2003-06	Trade and Convergence: Revisiting Ben-Davil	G. Gaulier
2003-05	Estimating the Fundamental Equilibrium Exchange Rate of Central and Eastern European Countries the	B. Egert & A. Lahrière-Révil

EMU Enlargement Perspective		
2003-04	Skills, Technology and Growth is ICT the Key to Success?	J. Melka, L. Nayman, S. Zignago & N. Mulder
2003-03	L'investissement en TIC aux Etats-Unis et dans quelques pays européens	G. Cette & P.A. Noual
2003-02	Can Business and Social Networks Explain the Border Effect Puzzle?	P.P. Combes, M. Lafourcade & T. Mayer
2003-01	Hyperinflation and the Reconstruction of a National Money: Argentina and Brazil, 1990-2002	J. Sgard
2002-18	Programme de travail du CEPII pour 2003	
2002-17	MIRAGE, a Computable General Equilibrium Model for Trade Policy Analysis	M.H. Bchir, Y. Decreux, J.L. Guérin & S. Jean
2002-16	Evolutions démographiques et marché du travail : des liens complexes et parfois contradictoires	L. Cadiou, J. Genet & J.L. Guérin
2002-15	Exchange Rate Regimes and Sustainable Parities for CEECs in the Run-up to EMU Membership	V. Coudert & C. Couharde
2002-14	When are Structural Deficits Good Policies?	J. Chateau
2002-13	Projections démographiques de quelques pays de l'Union Européenne (Allemagne, France, Italie, Royaume-Uni, Pays-Bas, Suède)	R. Sleiman
2002-12	Regional Trade Integration in Southern Africa	S. Chauvin & G. Gaulier
2002-11	Demographic Evolutions and Unemployment: an Analysis of French Labour Market with Workers Generations	J. Château, J.L. Guérin & F. Legros
2002-10	Liquidité et passage de la valeur	P. Villa
2002-09	Le concept de coût d'usage Putty-Clay des biens durables	M.G. Foggea & P. Villa
2002-08	Mondialisation et régionalisation : le cas des industries du textile et de l'habillement	M. Fouquin, P. Morand R. Avisse G. Minvielle & P. Dumont
2002-07	The Survival of Intermediate Exchange Rate Regimes	A. Bénassy-Quéré & B. Coeuré
2002-06	Pensions and Savings in a Monetary Union : An Analysis of Capital Flow	A. Jousten & F. Legros

2002-05	Brazil and Mexico's Manufacturing Performance in International Perspective, 1970-1999	N. Mulder, S. Montout & L. Peres Lopes
2002-04	The Impact of Central Bank Intervention on Exchange-Rate Forecast Heterogeneity	M. Beine, A. Benassy-Quéré, E. Dauchy & R. MacDonald
2002-04	The Impact of Central Bank Intervention on Forecast Heterogeneity	M. Beine, A. Benassy-Quéré, E. Dauchi & R. MacDonald
2002-03	Impacts économiques et sociaux de l'élargissement pour l'Union européenne et la France	M.H. Bchir & M. Maurel
2002-02	China in the International Segmentation of Production Processes	F. Lemoine & D. Ünal-Kesenci
2002-01	Illusory Border Effects: Distance Mismeasurement Inflates Estimates of Home Bias in Trade	K Head & T. Mayer
2001-22	Programme de travail du CEPII pour 2002	
2001-21	Croissance économique mondiale : un scénario de référence à l'horizon 2030	N. Kousnetzoff
2001-20	The Fiscal Stabilization Policy under EMU – An Empirical Assessment	A. Kadareja
2001-19	Direct Foreign Investments and Productivity Growth in Hungarian Firms, 1992-1999	J. Sgard
2001-18	Market Access Maps: A Bilateral and Disaggregated Measure of Market Access	A. Bouët, L. Fontagné, M. Mimouni & X. Pichot
2001-17	Macroeconomic Consequences of Pension Reforms in Europe: An Investigation with the INGENUE World Model	Equipe Ingénue
2001-16*	La productivité des industries méditerranéennes	A. Chevallier & D. Ünal-Kesenci
2001-15	Marmotte: A Multinational Model	L. Cadiou, S. Dees, S. Guichard, A. Kadareja, J.P. Laffargue & B. Rzepkowski
2001-14	The French-German Productivity Comparison Revisited: Ten Years After the German Unification	L. Nayman & D. Ünal-Kesenci
2001-13*	The Nature of Specialization Matters for Growth: An	I. Bensidoun, G. Gaulier

	Empirical Investigation	& D. Ünal-Kesenci
2001-12	Forum Economique Franco-Allemand - Deutsch-Französisches Wirtschaftspolitisches Forum, Political Economy of the Nice Treaty: Rebalancing the EU Council and the Future of European Agricultural Policies, 9 th meeting, Paris, June 26 th 2001	
2001-11	Sector Sensitivity to Exchange Rate Fluctuations	M. Fouquin, K. Sekkat, J. Malek Mansour, N. Mulder & L. Nayman
2001-10*	A First Assessment of Environment-Related Trade Barriers	L. Fontagné, F. von Kirchbach & M. Mimouni
2001-09	International Trade and Rent Sharing in Developed and Developing Countries	L. Fontagné & D. Mirza
2001-08	Economie de la transition : le dossier	G. Wild
2001-07	Exit Options for Argentina with a Special Focus on Their Impact on External Trade	S. Chauvin
2001-06	Effet frontière, intégration économique et 'Forteresse Europe'	T. Mayer
2001-05	Forum Économique Franco-Allemand – Deutsch-Französisches Wirtschaftspolitisches Forum, The Impact of Eastern Enlargement on EU-Labour Markets and Pensions Reforms between Economic and Political Problems, 8 th meeting, Paris, January 16 2001	
2001-04	Discrimination commerciale : une mesure à partir des flux bilatéraux	G. Gaulier
2001-03*	Heterogeneous Expectations, Currency Options and the Euro/Dollar Exchange Rate	B. Rzepkowski
2001-02	Defining Consumption Behavior in a Multi-Country Model	O. Allais, L. Cadiou & S. Déès
2001-01	Pouvoir prédictif de la volatilité implicite dans le prix des options de change	B. Rzepkowski
2000-22	Forum Economique Franco-Allemand - Deutsch-Französisches Wirtschaftspolitisches Forum, Trade Rules and Global Governance: A long Term Agenda and The Future of Banking in Europe, 7 th meeting, Paris, July 3-4 2000	
2000-21	The Wage Curve: the Lessons of an Estimation Over a	S. Guichard &

	Panel of Countries	J.P. Laffargue
2000-20	A Computational General Equilibrium Model with Vintage Capital	L. Cadiou, S. Déés & J.P. Laffargue
2000-19	Consumption Habit and Equity Premium in the G7 Countries	O. Allais, L. Cadiou & S. Déés
2000-18	Capital Stock and Productivity in French Transport: An International Comparison	B. Chane Kune & N. Mulder
2000-17	Programme de travail 2001	
2000-16	La gestion des crises de liquidité internationale : logique de faillite, prêteur en dernier ressort et conditionnalité	J. Sgard
2000-15	La mesure des protections commerciales nationales	A. Bouët
2000-14	The Convergence of Automobile Prices in the European Union: An Empirical Analysis for the Period 1993-1999	G. Gaulier & S. Haller
2000-13*	International Trade and Firms' Heterogeneity Under Monopolistic Competition	S. Jean
2000-12	Syndrome, miracle, modèle polder et autres spécificités néerlandaises : quels enseignements pour l'emploi en France ?	S. Jean
2000-11	FDI and the Opening Up of China's Economy	F. Lemoine
2000-10	Big and Small Currencies: The Regional Connection	A. Bénassy-Quéré & B. Coeuré
2000-09*	Structural Changes in Asia And Growth Prospects After the Crisis	J.C. Berthélemy & S. Chauvin
2000-08	The International Monetary Fund and the International Financial Architecture	M. Aglietta
2000-07	The Effect of International Trade on Labour-Demand Elasticities: Intersectoral Matters	S. Jean
2000-06	Foreign Direct Investment and the Prospects for Tax Co-Ordination in Europe	A. Bénassy-Quéré, L. Fontagné & A. Lahrière-Révil
2000-05	Forum Economique Franco-Allemand - Deutsch-Französisches Wirtschaftspolitisches Forum, Economic Growth in Europe Entering a New Area?/The First Year of EMU, 6 th meeting, Bonn, January 17-18, 2000	
2000-04*	The Expectations of Hong Kong Dollar Devaluation	B. Rzepkowski

- and their Determinants
- 2000-03** What Drove Relative Wages in France? Structural Decomposition Analysis in a General Equilibrium Framework, 1970-1992 S. Jean & O. Bontout
- 2000-02** Le passage des retraites de la répartition à la capitalisation obligatoire : des simulations à l'aide d'une maquette O. Rouguet & P. Villa
- 2000-01*** Rapport d'activité 1999

CEPII
DOCUMENTS DE TRAVAIL / WORKING PAPERS

Si vous souhaitez recevoir des Documents de travail,
merci de remplir le coupon-réponse ci-joint et de le retourner à :

*Should you wish to receive copies of the CEPII's Working papers,
just fill the reply card and return it to:*

Sylvie HURION – Publications
CEPII – 9, rue Georges-Pitard – 75740 Paris – Fax : (33) 1.53.68.55.04

M./Mme / Mr./Mrs

Nom-Prénom / Name-First name

Titre / Title

Service / Department

Organisme / Organisation

Adresse / Address

Ville & CP / City & post code

Pays / Country Tél

Désire recevoir les **Document de travail** du CEPII n° :

*Wish to receive the **CEPII's Working Papers** No:*

.....

.....

.....

.....

.....

.....

Souhaite être placé sur la liste de diffusion permanente (**pour les bibliothèques**)
*Wish to be placed on the standing mailing list (for **Libraries**).*